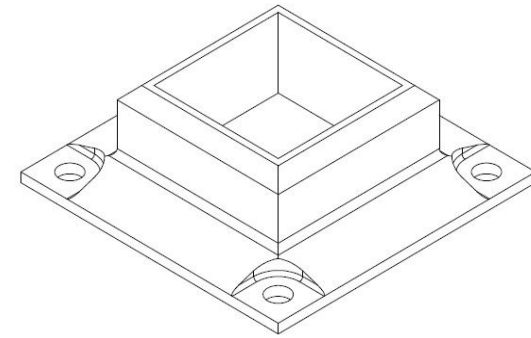
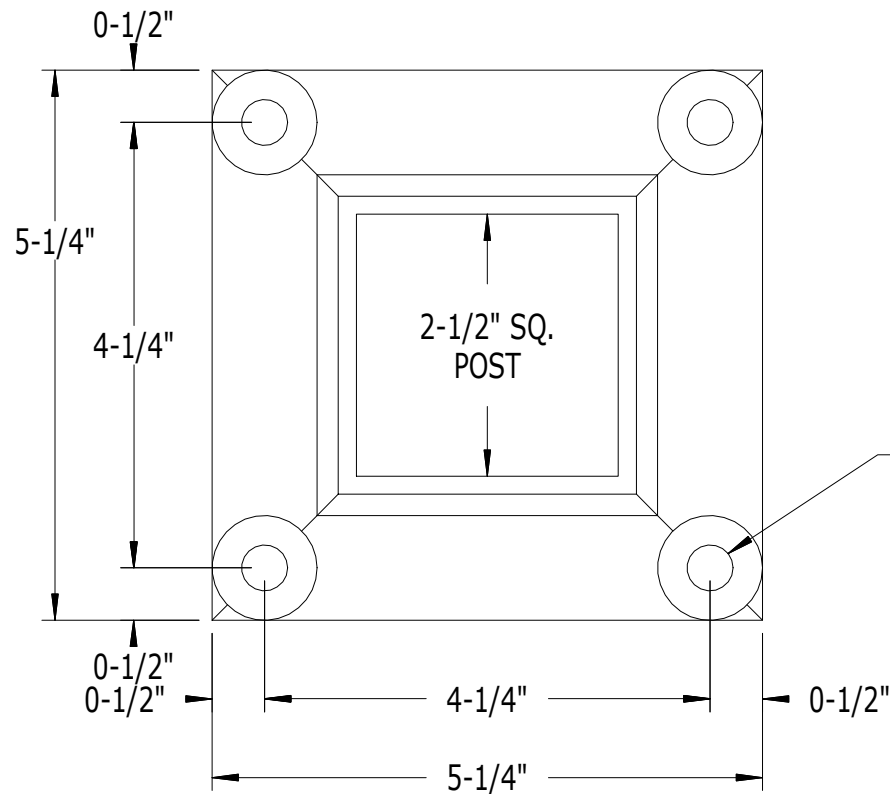
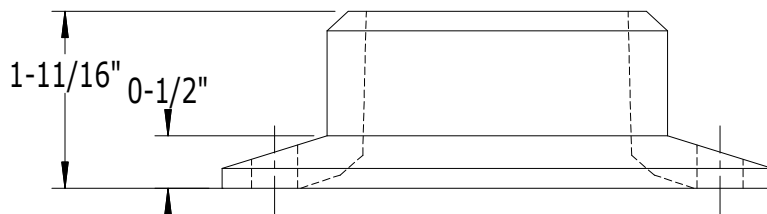


SCALE: 1/2



SPOT FACED FOR VERTICAL  
7/16" DIA. HOLES  
FOR 3/8" DIA. ANCHORS



2-1/2" SQ. POST FITTED WITH  
2.3" SQ. x 1/4" WALL x 3-5/8" LONG  
6063-T6 REINFORCEMENT BAR

**BASES ARE WELDED  
ONTO POSTS**

PART NO.

**973ESSF4**

DESCRIPTION

4-HOLE EXTRA SHORT HEAVY DUTY  
WELDED BASE FOR 2-1/2" SQ. POST

**SUPERIOR**  
ALUMINUM PRODUCTS