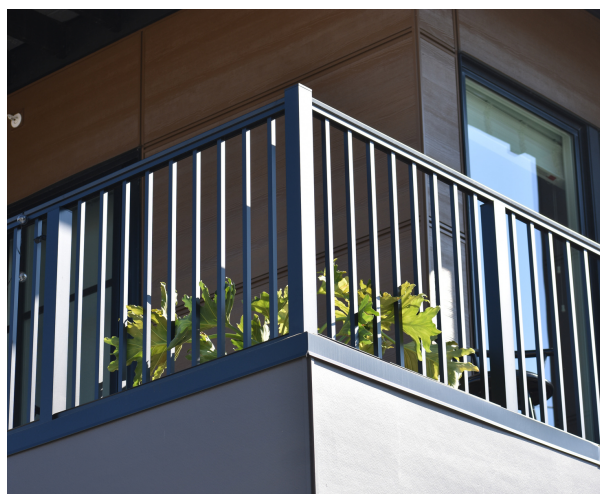


# Assembly of Level Railing

Series 9

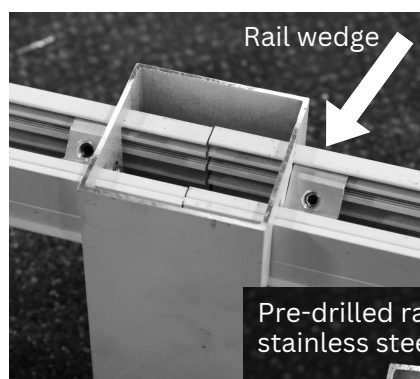
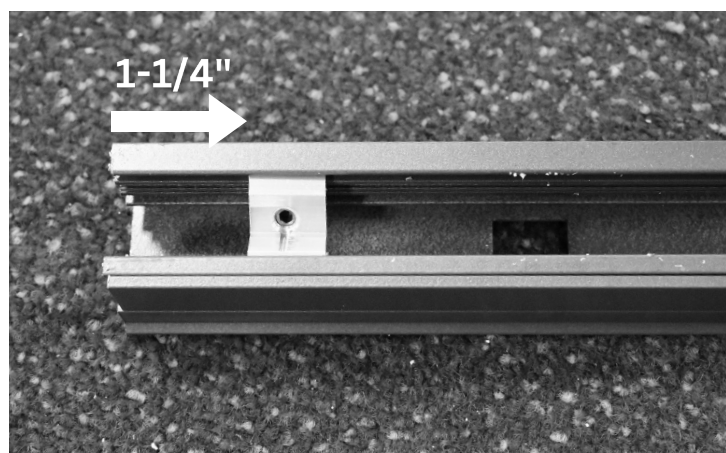


**CAUTION** – Before performing any work, be sure to refer to and follow all standard industry safety precautions. In addition, Superior Aluminum recommends that all Installers wear appropriate protective items, such as safety glasses, work gloves, and steel toed shoes, whenever performing work on Superior Aluminum, Inc.

## Shortening a Railing Section

When shortening a railing section, to meet Code Requirements, it is imperative that the gap between the last picket and the post is less than 4 inches. First, you must remove the rail wedges from the ends of all horizontal rails with a 1/8" Allen wrench.

Next, use a hacksaw or a cut off saw and cut to the required length. Remove any burrs from the sawcut. Finally, reinstall the rail wedges 1-1/4" from the end of all the horizontal rails.

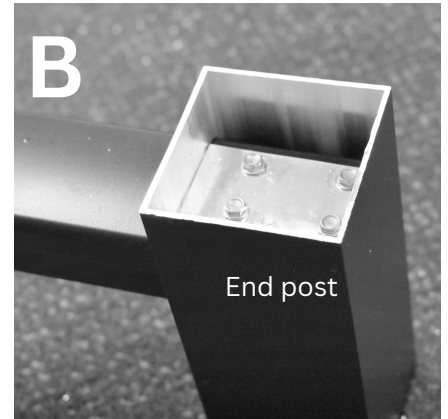
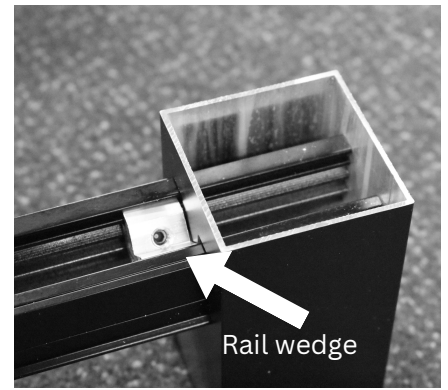
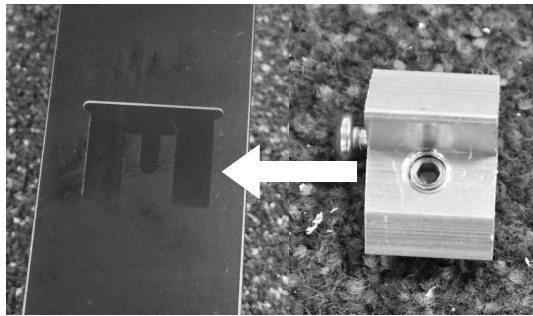


## Attaching to a Section Post

When attaching to a section post insert both top & bottom rails into the post. The rail wedge on the bottom rail should hit the post wall. Make sure the picket to post gap is parallel from top to bottom. The top rails will be connected to each other inside the top of the post using a rail tab as illustrated in picture A. Make sure top rail wedge is tightened enough to eliminate top rail being loose in the post.

## Attaching to an End Post

When attaching to an end post, you must remove the rail wedge using 1/8" Allen wrench from the end of the TOP HORIZONTAL RAIL (bottom rail not required). Using the furnished wedge with screw, attach the rail wedge to the post by sliding the head of the screw into the middle groove of the cut-out in the post. The screw should have a slide-in fit between the rail wedge and the post. Finally, slide the horizontal rail through the rail wedge and into the post pocket 2-3/8". Tighten the rail wedge with the Allen wrench.



## Attaching to a Corner Post

When attaching to a corner post, the horizontal rails will need to be mitered. Measure the bottom rail 7/8 inch from the corner of the horizontal rail in each direction and mark. Draw a straight line between the two marks. Cut this triangle using a hacksaw or a cut off saw. Remove any burrs from the sawcut. Repeat for the top rail using 1 inch. Follow the same procedure for installing the horizontal rails as explained in Attaching to an End Post. Connect the top rails using the rail tab as illustrated in picture C.

